

# V1STARA

HOUSE

Obj.1

Dubai Is a Gallery,  
and Buildings Are Showpieces



REAL ESTATE  
STAY AHEAD, INVEST SMART



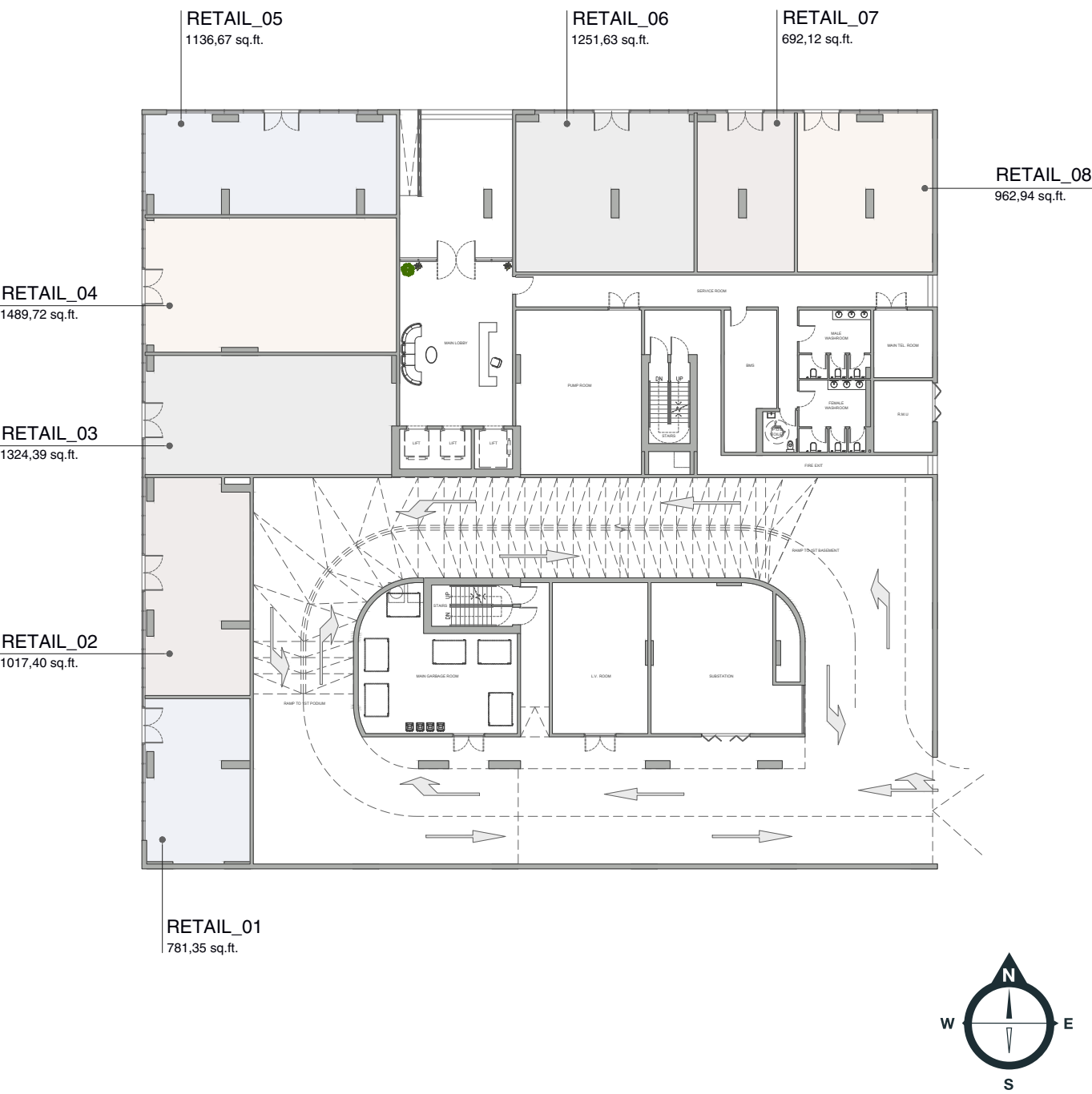
DUBRICKS  
POSSIBILITIES ARE LIMITLESS

V1STARA  
HOUSE

# Floor Plans

**GROUND FLOOR PLAN**  
FLOOR: G

**V1STARA**  
HOUSE



Disclaimer: all pictures, plans, layouts, information, data and details included in this brochure are indicative only may change at any time up to the final "as built" status in accordance with the final designs of the project, regulatory approvals and planning permissions

**TYPICAL FLOOR PLAN**  
FLOOR: 1

**V1STARA**  
HOUSE

DUBAI MARINA, AL FURJAN COMMUNITY

1BR\_D  
1134,30 sq.ft.

2,5BR\_A  
2203,37 sq.ft.

1BR\_C  
1219,55 sq.ft.

1BR\_B  
1219,55 sq.ft.

2BR\_A  
2458,80 sq.ft.

1BR\_A  
1316,96 sq.ft.

AL FURJAN COMMUNITY



AL FURJAN COMMUNITY, AL ASAYEL ST

AL FURJAN COMMUNITY VILLAS





# TYPICAL FLOOR PLAN

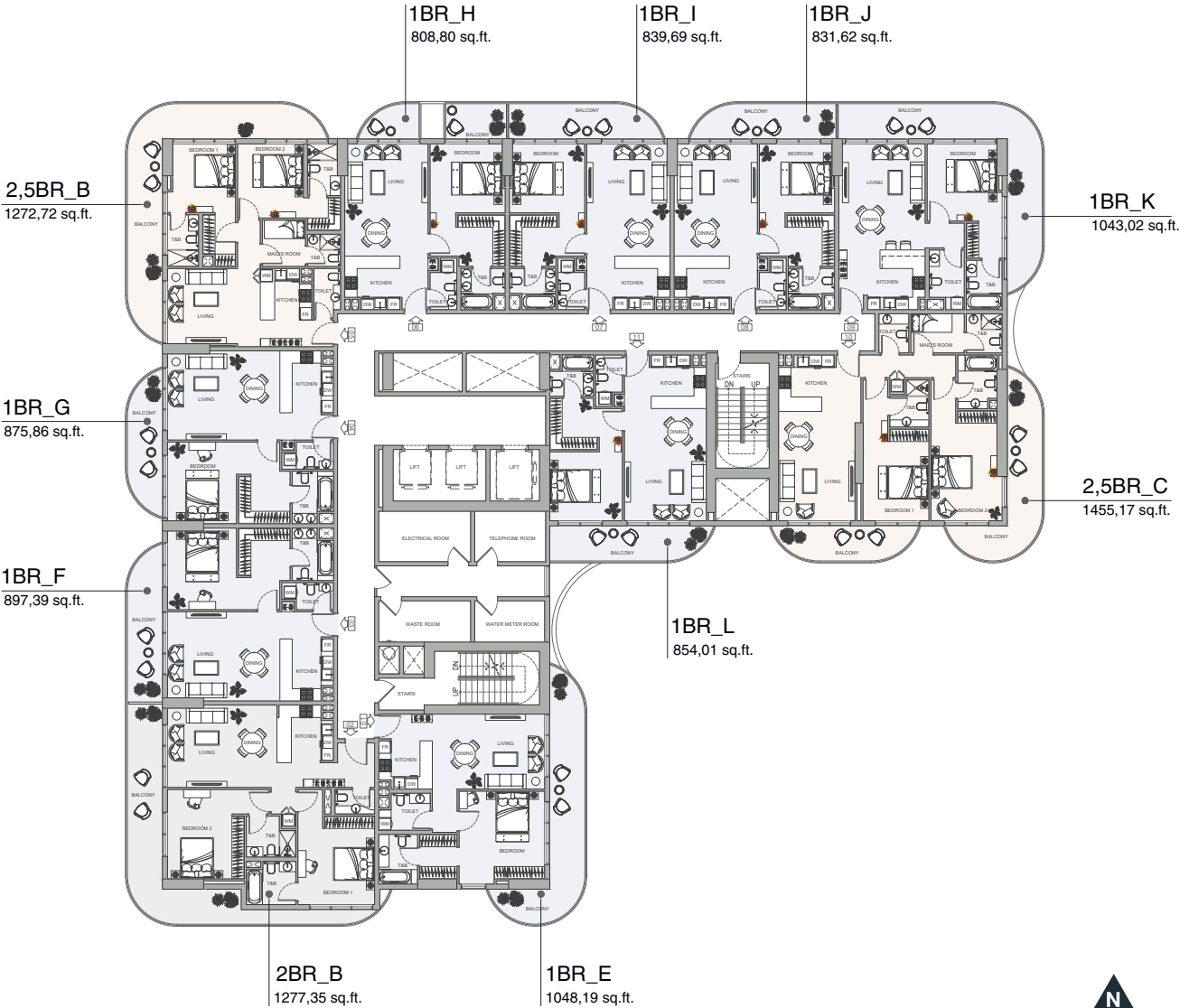
FLOOR: 2 - 9

V1STARA  
HOUSE

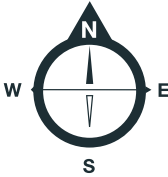
DUBAI MARINA, AL FURJAN COMMUNITY

AL FURJAN COMMUNITY, AL ASAYEL ST

AL FURJAN COMMUNITY VILLAS



AL FURJAN COMMUNITY



Disclaimer: all pictures, plans, layouts, information, data and details included in this brochure are indicative only may change at any time up to the final "as built" status in accordance with the final designs of the project, regulatory approvals and planning permissions

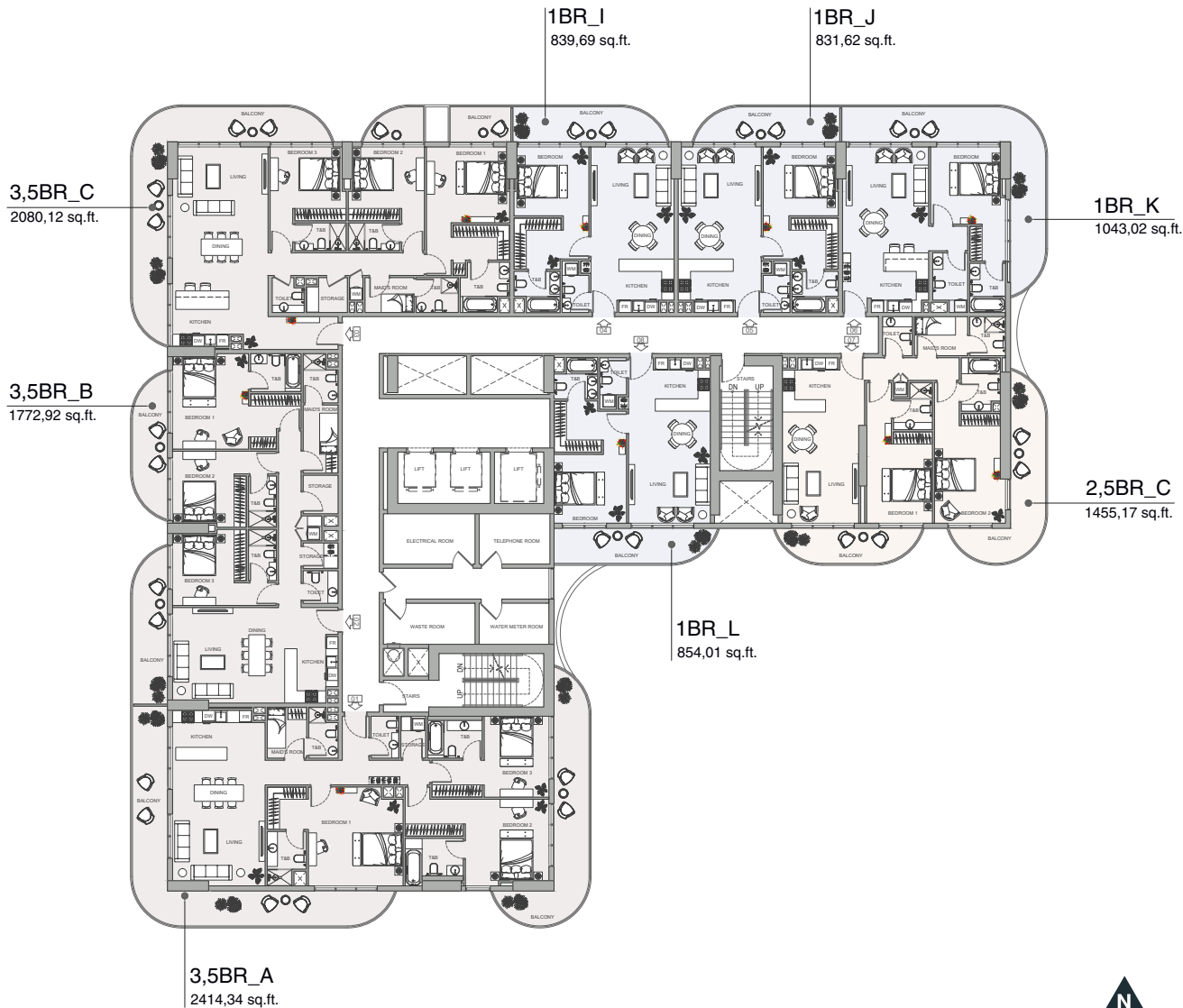
**TYPICAL FLOOR PLAN**  
FLOOR: 10

**V1STARA**  
HOUSE

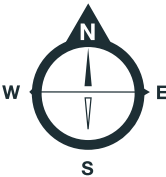
DUBAI MARINA, AL FURJAN COMMUNITY

AL FURJAN COMMUNITY, AL ASAYEL ST

AL FURJAN COMMUNITY VILLAS



AL FURJAN COMMUNITY



Disclaimer: all pictures, plans, layouts, information, data and details included in this brochure are indicative only may change at any time up to the final "as built" status in accordance with the final designs of the project, regulatory approvals and planning permissions

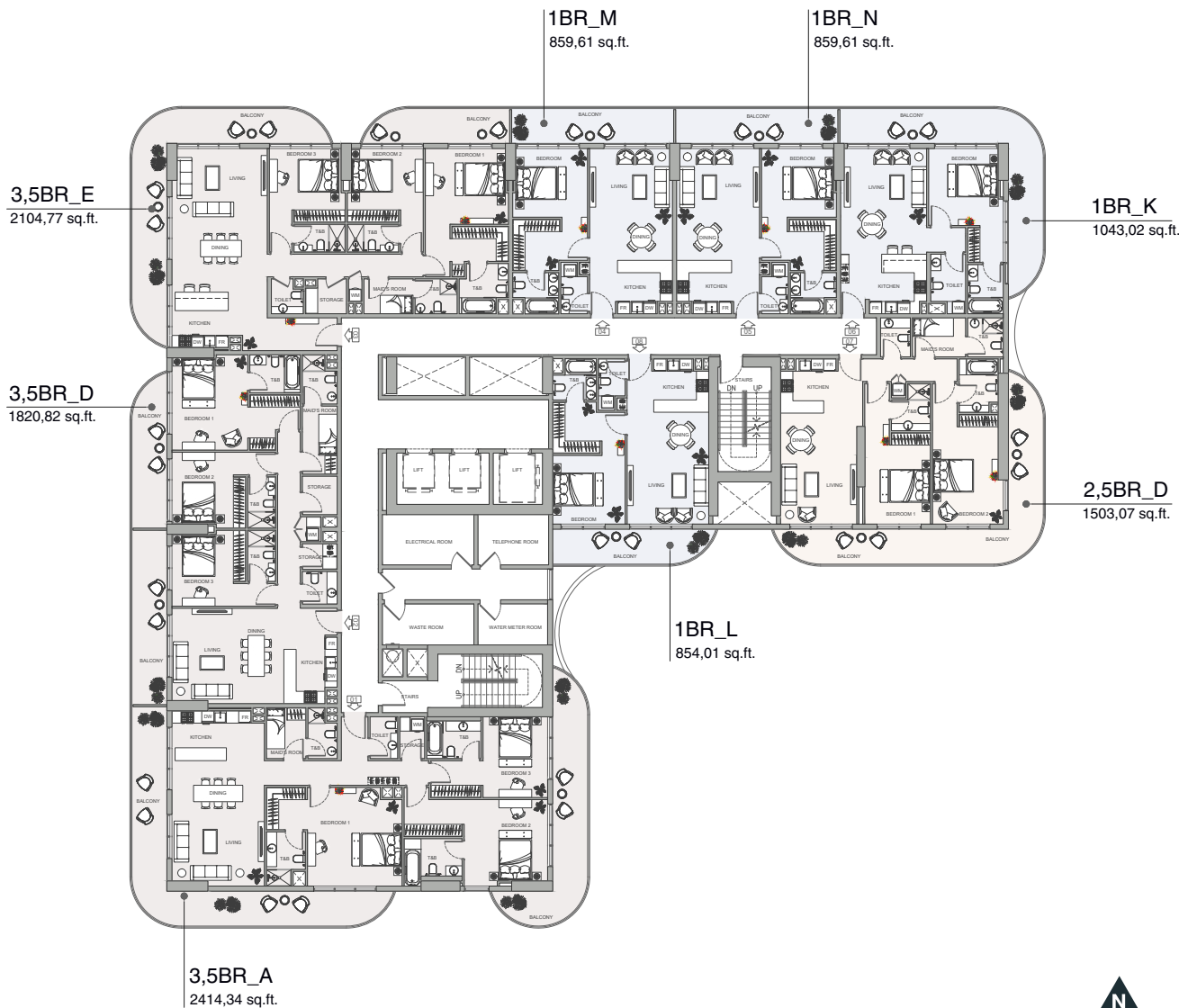
**TYPICAL FLOOR PLAN**  
FLOOR: 11 - 13

**V1STARA**  
HOUSE

DUBAI MARINA, AL FURJAN COMMUNITY

AL FURJAN COMMUNITY, AL ASAYEL ST

AL FURJAN COMMUNITY VILLAS



AL FURJAN COMMUNITY



Disclaimer: all pictures, plans, layouts, information, data and details included in this brochure are indicative only may change at any time up to the final "as built" status in accordance with the final designs of the project, regulatory approvals and planning permissions

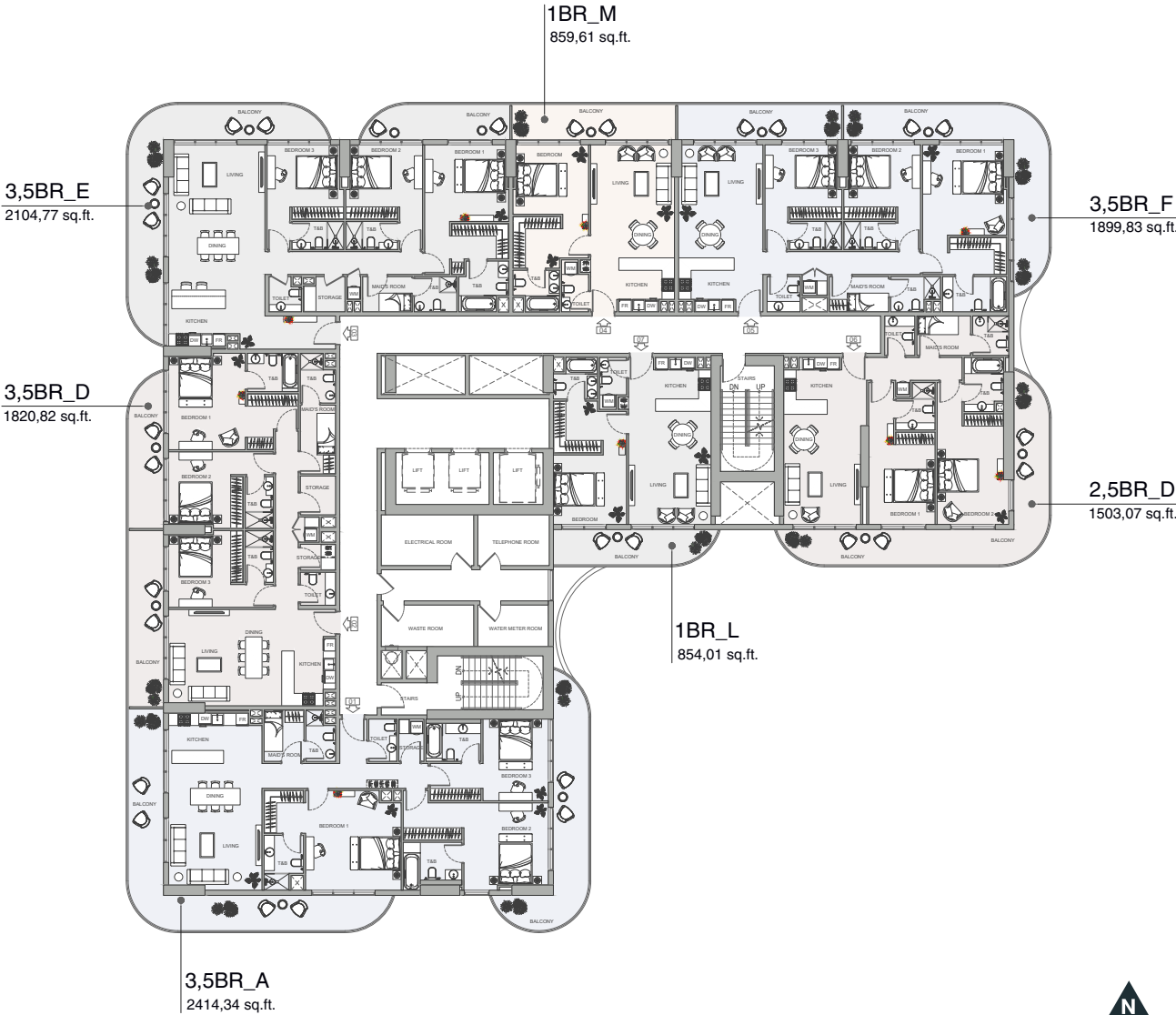
**TYPICAL FLOOR PLAN**  
FLOOR: 12 - 14

**V1STARA**  
HOUSE

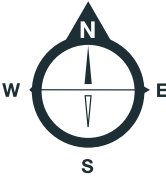
DUBAI MARINA, AL FURJAN COMMUNITY

AL FURJAN COMMUNITY, AL ASAYEL ST

AL FURJAN COMMUNITY VILLAS



AL FURJAN COMMUNITY



Disclaimer: all pictures, plans, layouts, information, data and details included in this brochure are indicative only may change at any time up to the final "as built" status in accordance with the final designs of the project, regulatory approvals and planning permissions

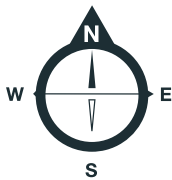
V1STARA  
HOUSE

One Bedroom



ONE BEDROOM  
FLOOR: 1

V1STARA  
HOUSE



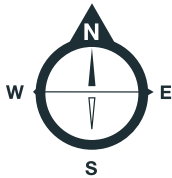
1 BR TYPE A

|                     |         |        |
|---------------------|---------|--------|
| SUITE AREA          | 754,23  | sq. ft |
| BALCONY AREA        | 562,74  | sq. ft |
| TOTAL SELLABLE AREA | 1316,96 | sq. ft |

ONE BEDROOM

FLOOR: 1

V1STARA  
HOUSE



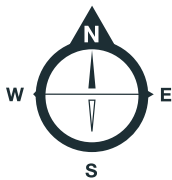
1 BR TYPE B

|                     |         |        |
|---------------------|---------|--------|
| SUITE AREA          | 754,44  | sq. ft |
| BALCONY AREA        | 465,11  | sq. ft |
| TOTAL SELLABLE AREA | 1219,55 | sq. ft |

Disclaimer: all pictures, plans, layouts, information, data and details included in this brochure are indicative only may change at any time up to the final "as built" status in accordance with the final designs of the project, regulatory approvals and planning permissions

**ONE BEDROOM**  
FLOOR: 1

**V1STARA**  
HOUSE



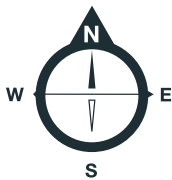
**1 BR TYPE C**

|                     |                |        |
|---------------------|----------------|--------|
| SUITE AREA          | <b>754,44</b>  | sq. ft |
| BALCONY AREA        | <b>465,11</b>  | sq. ft |
| TOTAL SELLABLE AREA | <b>1219,55</b> | sq. ft |

Disclaimer: all pictures, plans, layouts, information, data and details included in this brochure are indicative only may change at any time up to the final "as built" status in accordance with the final designs of the project, regulatory approvals and planning permissions

ONE BEDROOM  
FLOOR: 1

V1STARA  
HOUSE



1 BR TYPE D

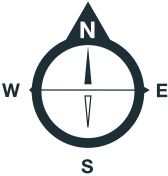
|                     |         |        |
|---------------------|---------|--------|
| SUITE AREA          | 700,51  | sq. ft |
| BALCONY AREA        | 433,79  | sq. ft |
| TOTAL SELLABLE AREA | 1134,30 | sq. ft |

Disclaimer: all pictures, plans, layouts, information, data and details included in this brochure are indicative only may change at any time up to the final "as built" status in accordance with the final designs of the project, regulatory approvals and planning permissions

ONE BEDROOM

FLOOR: 2 - 9

V1STARA  
HOUSE



1 BR TYPE E

|                     |         |        |
|---------------------|---------|--------|
| SUITE AREA          | 752,50  | sq. ft |
| BALCONY AREA        | 295,68  | sq. ft |
| TOTAL SELLABLE AREA | 1048,19 | sq. ft |

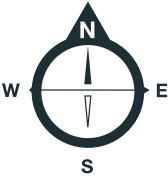
Disclaimer: all pictures, plans, layouts, information, data and details included in this brochure are indicative only may change at any time up to the final "as built" status in accordance with the final designs of the project, regulatory approvals and planning permissions



ONE BEDROOM

FLOOR: 2 - 9

V1STARA  
HOUSE



1 BR TYPE F

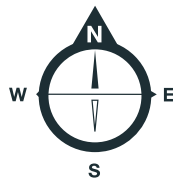
|                     |        |        |
|---------------------|--------|--------|
| SUITE AREA          | 754,44 | sq. ft |
| BALCONY AREA        | 142,94 | sq. ft |
| TOTAL SELLABLE AREA | 897,39 | sq. ft |

Disclaimer: all pictures, plans, layouts, information, data and details included in this brochure are indicative only may change at any time up to the final "as built" status in accordance with the final designs of the project, regulatory approvals and planning permissions

# ONE BEDROOM

FLOOR: 2 - 9

V1STARA  
HOUSE



## 1 BR TYPE G

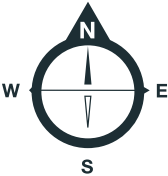
|                     |        |        |
|---------------------|--------|--------|
| SUITE AREA          | 754,44 | sq. ft |
| BALCONY AREA        | 121,42 | sq. ft |
| TOTAL SELLABLE AREA | 875,86 | sq. ft |

Disclaimer: all pictures, plans, layouts, information, data and details included in this brochure are indicative only may change at any time up to the final "as built" status in accordance with the final designs of the project, regulatory approvals and planning permissions

ONE BEDROOM

FLOOR: 2 - 9

V1STARA  
HOUSE



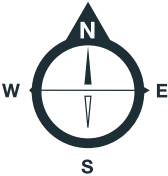
1 BR TYPE H

|                     |        |        |
|---------------------|--------|--------|
| SUITE AREA          | 700,30 | sq. ft |
| BALCONY AREA        | 108,50 | sq. ft |
| TOTAL SELLABLE AREA | 808,80 | sq. ft |

Disclaimer: all pictures, plans, layouts, information, data and details included in this brochure are indicative only may change at any time up to the final "as built" status in accordance with the final designs of the project, regulatory approvals and planning permissions

ONE BEDROOM  
FLOOR: 2 - 10

V1STARA  
HOUSE



1 BR TYPE I

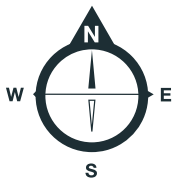
|                     |        |        |
|---------------------|--------|--------|
| SUITE AREA          | 700,30 | sq. ft |
| BALCONY AREA        | 139,39 | sq. ft |
| TOTAL SELLABLE AREA | 839,69 | sq. ft |

Disclaimer: all pictures, plans, layouts, information, data and details included in this brochure are indicative only may change at any time up to the final "as built" status in accordance with the final designs of the project, regulatory approvals and planning permissions

ONE BEDROOM

FLOOR: 2 - 10

V1STARA  
HOUSE



1 BR TYPE J

|                     |        |        |
|---------------------|--------|--------|
| SUITE AREA          | 700,30 | sq. ft |
| BALCONY AREA        | 131,32 | sq. ft |
| TOTAL SELLABLE AREA | 831,62 | sq. ft |

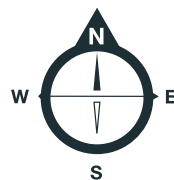
Disclaimer: all pictures, plans, layouts, information, data and details included in this brochure are indicative only may change at any time up to the final "as built" status in accordance with the final designs of the project, regulatory approvals and planning permissions



ONE BEDROOM

FLOOR: 2 - 13

V1STARA  
HOUSE

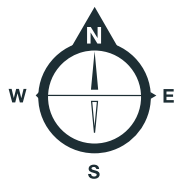


1 BR TYPE K

|                     |                |        |
|---------------------|----------------|--------|
| SUITE AREA          | <b>716,98</b>  | sq. ft |
| BALCONY AREA        | <b>326,04</b>  | sq. ft |
| TOTAL SELLABLE AREA | <b>1043,02</b> | sq. ft |

**ONE BEDROOM**  
FLOOR: 2 - 14

V1STARA  
HOUSE



**1 BR TYPE L**

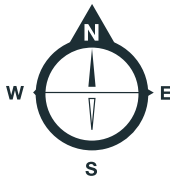
|                     |               |        |
|---------------------|---------------|--------|
| SUITE AREA          | <b>697,93</b> | sq. ft |
| BALCONY AREA        | <b>156,08</b> | sq. ft |
| TOTAL SELLABLE AREA | <b>854,01</b> | sq. ft |

Disclaimer: all pictures, plans, layouts, information, data and details included in this brochure are indicative only may change at any time up to the final "as built" status in accordance with the final designs of the project, regulatory approvals and planning permissions

ONE BEDROOM

FLOOR: 11 - 14

V1STARA  
HOUSE



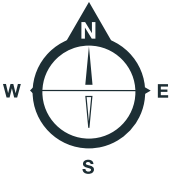
1 BR TYPE M

|                     |        |        |
|---------------------|--------|--------|
| SUITE AREA          | 700,30 | sq. ft |
| BALCONY AREA        | 159,31 | sq. ft |
| TOTAL SELLABLE AREA | 859,61 | sq. ft |

Disclaimer: all pictures, plans, layouts, information, data and details included in this brochure are indicative only may change at any time up to the final "as built" status in accordance with the final designs of the project, regulatory approvals and planning permissions

**ONE BEDROOM**  
FLOOR: 11 - 13

**V1STARA**  
HOUSE



**1 BR TYPE N**

|                     |               |        |
|---------------------|---------------|--------|
| SUITE AREA          | <b>700,30</b> | sq. ft |
| BALCONY AREA        | <b>159,31</b> | sq. ft |
| TOTAL SELLABLE AREA | <b>859,61</b> | sq. ft |

Disclaimer: all pictures, plans, layouts, information, data and details included in this brochure are indicative only may change at any time up to the final "as built" status in accordance with the final designs of the project, regulatory approvals and planning permissions

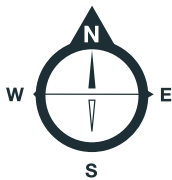
V1STARA  
HOUSE

Two Bedroom



**TWO BEDROOM**  
FLOOR: 1

**V1STARA**  
HOUSE



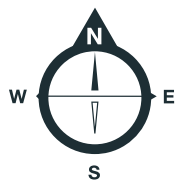
**2 BR TYPE A**

|                     |                |        |
|---------------------|----------------|--------|
| SUITE AREA          | <b>1001,37</b> | sq. ft |
| BALCONY AREA        | <b>1457,43</b> | sq. ft |
| TOTAL SELLABLE AREA | <b>2458,80</b> | sq. ft |

Disclaimer: all pictures, plans, layouts, information, data and details included in this brochure are indicative only may change at any time up to the final "as built" status in accordance with the final designs of the project, regulatory approvals and planning permissions

**TWO BEDROOM**  
FLOOR: 2 - 9

**V1STARA**  
HOUSE



**2 BR TYPE B**

|                     |                |        |
|---------------------|----------------|--------|
| SUITE AREA          | <b>998,67</b>  | sq. ft |
| BALCONY AREA        | <b>278,68</b>  | sq. ft |
| TOTAL SELLABLE AREA | <b>1277,35</b> | sq. ft |

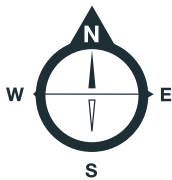
Disclaimer: all pictures, plans, layouts, information, data and details included in this brochure are indicative only may change at any time up to the final "as built" status in accordance with the final designs of the project, regulatory approvals and planning permissions

V1STARA  
HOUSE

# Two Bedroom Pro

**TWO BEDROOM PRO**  
FLOOR: 1

**V1STARA**  
HOUSE



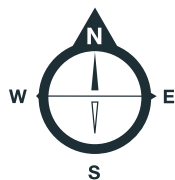
**2,5 BR TYPE A**

|                     |                |        |
|---------------------|----------------|--------|
| SUITE AREA          | <b>919,88</b>  | sq. ft |
| BALCONY AREA        | <b>1283,49</b> | sq. ft |
| TOTAL SELLABLE AREA | <b>2203,37</b> | sq. ft |

Disclaimer: all pictures, plans, layouts, information, data and details included in this brochure are indicative only may change at any time up to the final "as built" status in accordance with the final designs of the project, regulatory approvals and planning permissions

**TWO BEDROOM PRO**  
FLOOR: 2 - 9

**V1STARA**  
HOUSE



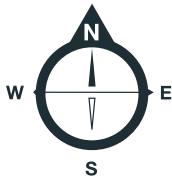
**2,5 BR TYPE B**

|                     |                |        |
|---------------------|----------------|--------|
| SUITE AREA          | <b>919,88</b>  | sq. ft |
| BALCONY AREA        | <b>352,84</b>  | sq. ft |
| TOTAL SELLABLE AREA | <b>1272,72</b> | sq. ft |

Disclaimer: all pictures, plans, layouts, information, data and details included in this brochure are indicative only may change at any time up to the final "as built" status in accordance with the final designs of the project, regulatory approvals and planning permissions

**TWO BEDROOM PRO**  
FLOOR: 2 - 10

**V1STARA**  
HOUSE



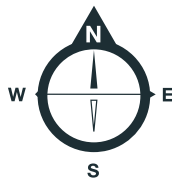
**2,5 BR TYPE C**

|                     |                       |
|---------------------|-----------------------|
| SUITE AREA          | <b>1112,88</b> sq. ft |
| BALCONY AREA        | <b>342,29</b> sq. ft  |
| TOTAL SELLABLE AREA | <b>1455,17</b> sq. ft |

Disclaimer: all pictures, plans, layouts, information, data and details included in this brochure are indicative only may change at any time up to the final "as built" status in accordance with the final designs of the project, regulatory approvals and planning permissions

**TWO BEDROOM PRO**  
FLOOR: 11 - 14

**V1STARA**  
HOUSE



**2,5 BR TYPE D**

|                     |                       |
|---------------------|-----------------------|
| SUITE AREA          | <b>1112,88</b> sq. ft |
| BALCONY AREA        | <b>390,19</b> sq. ft  |
| TOTAL SELLABLE AREA | <b>1503,07</b> sq. ft |

Disclaimer: all pictures, plans, layouts, information, data and details included in this brochure are indicative only may change at any time up to the final "as built" status in accordance with the final designs of the project, regulatory approvals and planning permissions



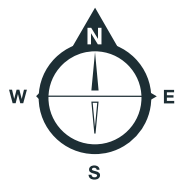
V1STARA  
HOUSE

Three Bedroom Pro



**THREE BEDROOM PRO**  
FLOOR: 10 - 14

**V1STARA**  
HOUSE

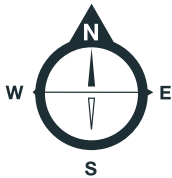
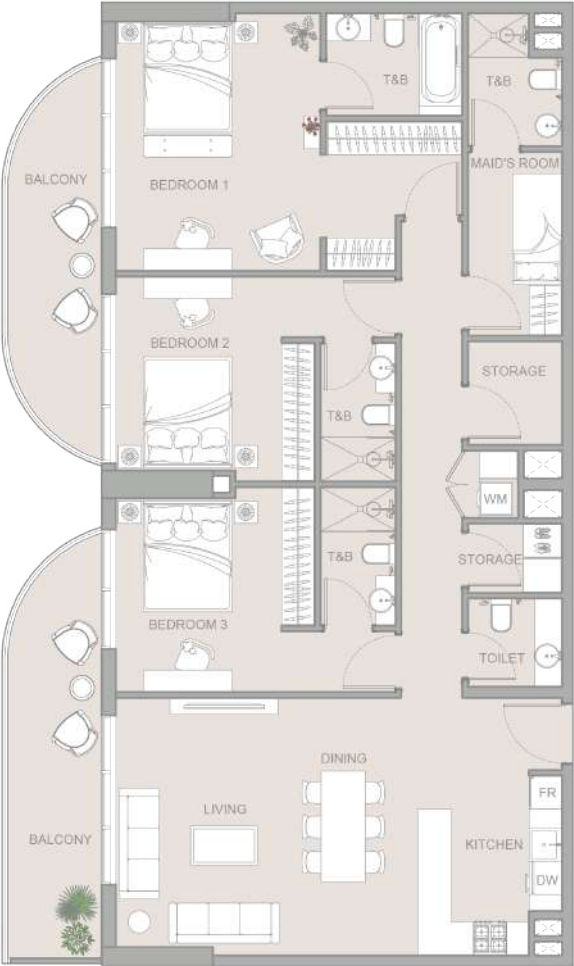


**3,5 BR TYPE A**

|                     |                       |
|---------------------|-----------------------|
| SUITE AREA          | <b>1708,77</b> sq. ft |
| BALCONY AREA        | <b>705,57</b> sq. ft  |
| TOTAL SELLABLE AREA | <b>2414,34</b> sq. ft |

**THREE BEDROOM PRO**  
FLOOR: 10

V1STARA  
HOUSE

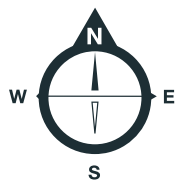


**3,5 BR TYPE B**

|                     |                       |
|---------------------|-----------------------|
| SUITE AREA          | <b>1508,56</b> sq. ft |
| BALCONY AREA        | <b>264,36</b> sq. ft  |
| TOTAL SELLABLE AREA | <b>1772,92</b> sq. ft |

**THREE BEDROOM PRO**  
FLOOR: 10

**V1STARA**  
HOUSE

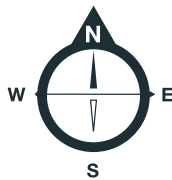
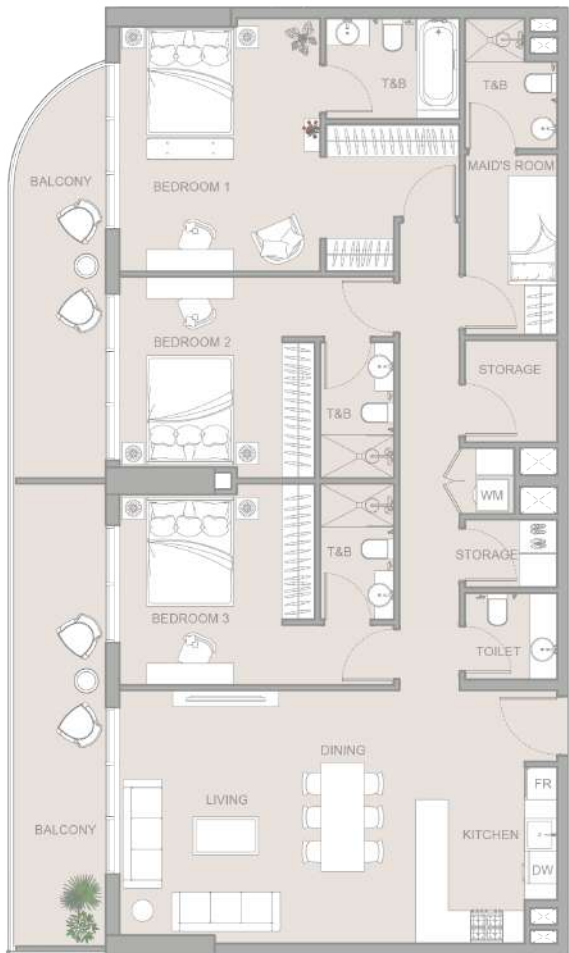


**3,5 BR TYPE C**

|                     |                       |
|---------------------|-----------------------|
| SUITE AREA          | <b>1618,78</b> sq. ft |
| BALCONY AREA        | <b>461,34</b> sq. ft  |
| TOTAL SELLABLE AREA | <b>2080,12</b> sq. ft |

**THREE BEDROOM PRO**  
FLOOR: 11 - 14

V1STARA  
HOUSE



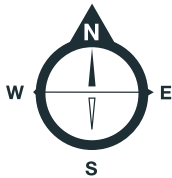
**3,5 BR TYPE D**

|                     |                       |
|---------------------|-----------------------|
| SUITE AREA          | <b>1508,56</b> sq. ft |
| BALCONY AREA        | <b>312,26</b> sq. ft  |
| TOTAL SELLABLE AREA | <b>1820,82</b> sq. ft |

Disclaimer: all pictures, plans, layouts, information, data and details included in this brochure are indicative only may change at any time up to the final "as built" status in accordance with the final designs of the project, regulatory approvals and planning permissions

**THREE BEDROOM PRO**  
FLOOR: 11 - 14

**V1STARA**  
HOUSE

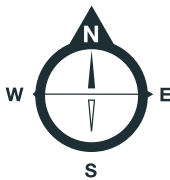


**3,5 BR TYPE E**

|                     |                       |
|---------------------|-----------------------|
| SUITE AREA          | <b>1618,78</b> sq. ft |
| BALCONY AREA        | <b>485,99</b> sq. ft  |
| TOTAL SELLABLE AREA | <b>2104,77</b> sq. ft |

**THREE BEDROOM PRO**  
FLOOR: 12 - 14

**V1STARA**  
HOUSE



**3,5 BR TYPE F**

|                     |                |        |
|---------------------|----------------|--------|
| SUITE AREA          | <b>1414,48</b> | sq. ft |
| BALCONY AREA        | <b>485,34</b>  | sq. ft |
| TOTAL SELLABLE AREA | <b>1899,83</b> | sq. ft |

Disclaimer: all pictures, plans, layouts, information, data and details included in this brochure are indicative only may change at any time up to the final "as built" status in accordance with the final designs of the project, regulatory approvals and planning permissions

# V1STARA

## HOUSE

FOR MORE INFORMATION PLEASE CONTACT

**AFS**  
**REAL ESTATE**  
STAY AHEAD, INVEST SMART

📞 +971 55 476 7630  
☎️ +971 4 368 7878  
✉️ [info@afsrealestate.com](mailto:info@afsrealestate.com)  
🌐 [www.afsrealestate.com](http://www.afsrealestate.com)

**db**  
**DUBRICKS**  
POSSIBILITIES ARE LIMITLESS

📞 +971 50 674 2020  
☎️ +971 4 368 7878  
✉️ [info@dubricks.com](mailto:info@dubricks.com)  
🌐 [www.dubricks.com](http://www.dubricks.com)